

RCYD SEP 9 1969 OAN

GENERAL INFORMATION BOOK

OF

U. S. COAST GUARD

LORAN MONITOR STATION

BERMUDA

JULY 1969

www.loran-history.info

INTRODUCTION

You are soon to become a resident in a foreign country named Bermuda. It will be advantageous if you (and your family) have some advance information on the type of living conditions you are about to encounter.

This booklet and the accompanying material is aimed at giving you some ideas of the Bermuda way of life and to answer pertinent questions which, by past experience, are known to arise.

Although American servicemen have been stationed in Bermuda since 1941 and have been a significant portion of the overall population, we are guests in a foreign country. As such, we are obligated to abide by the laws and customs of the land. As individuals we are each a representative of the United States, and are charged with the responsibility of supporting and enhancing the international relationship between our respective countries. Bermudians have proven themselves to be understanding, friendly and hospitable. They may not welcome you with open arms or give a red-carpet treatment upon initial meeting but when shown a friendly attitude they will respond accordingly. Many true and lasting friendships between Americans and Bermudians have developed through the years.

If you find you require additional information, please address your request to:

Commanding Officer
USCG Loran Monitor Station
FPO New York 09560

INDEX

- CHAPTER 1. General Information
- CHAPTER 2. Operations
- CHAPTER 3. Personnel
- CHAPTER 4. Engineering
- CHAPTER 5. Comptroller
- CHAPTER 6. Administration
- CHAPTER 7. Guidance to Relief Personnel

SUPPLEMENT I

Charts and Photographs

TABLE OF CONTENTS

Chapter I General Information

A. Geographic	1-1
B. Topographic	1-1
C. Weather	1-1
D. Population	1-1
E. Civil Affairs	1-1
F. Local Economics	1-2
G. American Consulate General	1-2
H. Churches	1-2
I. Local Schools	1-2
J. U. S. Military Bases in Bermuda	1-3
1. U. S. Coast Guard	1-3
2. U. S. Naval Station	1-3
3. Kindley Air Force Base	1-5

Chapter II Operations

A. Aids to Navigation	2-1
B. Watchstanding	2-1
C. Daily Routine	2-1
D. Communications	2-2
E. Liason	2-2
F. Vehicles	2-2

Chapter III Personnel

A. Complement	3-1
B. Administration of Personnel Records	3-1
C. Medical Facilities	3-1
D. Training and Education	3-1
E. Morale and Welfare	3-1
1. Outdoor Recreational Facilities	3-1
2. Indoor Recreational Facilities	3-2
3. Mail	3-2
4. Exchange	3-2
F. Water	3-2
G. Leave and Liberty	3-2

Chapter IV Station Engineering

A. General Engineering	4-1
1. Power Plant	4-1
2. Damage Control	4-1
3. Electrical System	4-1
4. Heating System	4-1
5. Ventilation System	4-1
6. Fuel Oil System	4-1
7. Fresh Water System	4-2
8. Buildings	4-2

TABLE OF CONTENTS (Continued)

Chapter IV Engineering

J. Electronic Engineering	4-2
1. Loran Monitoring Equipment	4-2
2. Communications Equipment	4-2
3. Omega Equipment	4-3
4. Test Equipment	4-3

Chapter V Comptroller

A. Commissary	5-1
B. Supply	5-1
C. Pay	5-1
D. Fuel and Oil	5-1
E. Transportation	5-1

Chapter VI Administration

A. Chain of Command	6-1
B. Official Correspondence and Reports	6-1
C. Delegation of Authority	6-1
D. Station Bills	6-1

Chapter VII Guidance for Relief Personnel

A. Mailing Address	7-1
B. Stamps	7-1
C. Family Facilities	7-1
D. Things to do After Receiving Orders	7-1
E. Housing, Utilities, and Household Eff.	7-2
F. Additional Requirements Relieving CO	7-5
G. Special Allowances	7-5

CHAPTER I: GENERAL INFORMATION

- A GEOGRAPHIC INFORMATION. Bermuda is an archipelago that is located 660 nautical miles to the southeast of New York City and 760 nautical miles from Savannah, Georgia which is on the same latitude. Cape Hatteras, at 540 nautical miles is the nearest point of land. The total land area is about 22 square miles, 21 miles in length, and on the average less than a mile wide. Slightly greater than two square miles are leased to the United States for use as military bases.
- B TOPOGRAPHIC INFORMATION. It is one of the most isolated areas in the world. The archipelago consists of seven islands and about 150 islets. The terrain is very hilly and has an extremely shallow covering of soil.
- C WEATHER. The climate is mild with temperature rarely exceeding 90 degrees in the summer and seldom below 50 degrees in the winter. The year round relative humidity averages above 75 percent. Annual rainfall averages nearly 60 inches, and is more prevalent during the winter when high winds are also commonplace.
- D POPULATION. The civilian population numbers 55,000 (1968 estimate.) In addition to the 6000 American military personnel with their dependents assigned to the two U.S. bases, another 2000 or so Americans reside on the island all or part of the year. In fact, there is an average of about 380 Americans per square mile in Bermuda, which is greater than any country in the world including the United States. There are more than 4000 immigrants from the British Isles, about 1000 from Canada, and the British West Indies. Nearly 1000 Portuguese, mostly from the Azores on a contract basis as farmers and gardeners ~~are~~ here. Several hundred Europeans (German, Austrian, Swiss, French and Italian) are employed mainly in the colony's hotels.
- E CIVIL AFFAIRS. The Bermuda constitution provides for a government known in the Commonwealth as a "responsible self-governing Colony". The governor of the Colony is appointed by the Crown of England. He is responsible to the Crown for the administration of the Colony, the police, and the Regiment. The British government is responsible for the foreign affairs. The colony's constitution or franchise gives the citizens of Bermuda the right to elect representatives from their districts to the Lower House. These representatives are elected along party lines similar to the United States. The Franchise provides a one man one vote system. Persons over 21 years of age are entitled to vote in the elections which are held each four years. Forty members are elected to the lower house or House of Assembly and twelve members are elected to the upper house or Legislative Council which also includes the governor. No member may serve in the upper house. Although a number of key officials are appointed by the crown, they exercise no veto over the enactments of the local legislature, and the colony is therefore autonomous in its internal affairs. Its foreign affairs are bound by the treaties and policies of Great Britain.

CHAPTER I (con't.)

- F LOCAL ECONOMICS. Almost all Bermudians in one way or another derive income from the tourist industry. In 1968 approximately 325,000 tourists, of whom 275,000 were Americans, visited and spent 45 million dollars in the colony. Bermuda derives roughly 12 million dollars annually from the various U.S. bases through contracts to local firms, salaries to local employees, private expenditures by base personnel and rental payments for off-base housing. There are only a few light industries, a very small fishing industry and an inadequate agricultural output. As a result, almost all manufactured items and foodstuffs must be imported. The United States supplies about 40 percent of all imports, the United Kingdom approximately 40 percent, Canada 15 percent, and New Zealand 5 percent. The government earns two thirds of its revenue from import duties. It imposes a land tax on the ownership of land from which it realizes \$1,560,000. It imposes no sales tax, no inheritance tax and no profit tax. Heavy import duties are reflected in retail prices with the result that the cost of living is high. Nevertheless, the island has enjoyed ever increasing prosperity since the end of World War II. There is no involuntary unemployment. The major industry of Bermuda is tourism and the cost of living index is so proportioned.
- G AMERICAN CONSULATE GENERAL. The first consul or agent for the United States in Bermuda was appointed in 1818. The office was raised to a consulate general in 1951, and is currently staffed by four Americans and seven local employees. The consul general is the ranking United States official on the island.
- H CHURCHES. Bermuda has many churches, primarily Anglican, Methodist, and Roman Catholic.
- I LOCAL SCHOOLS. The local Bermudian schools are organized according to the English school system. Children start school at 5 years of age. The high schools are not accredited in the U.S. due to lack of American History and Civics Courses. If you desire to utilize Bermudian Schools, the Coast Guard will pay the tuition for all grades; however, transportation must be provided by the parents. In recent years the local schools have become crowded, with the greatest congestion being in the lower grades. As a result, some schools are in heavy demand and enrollment therein is uncertain.

Uniforms are worn by children attending local schools. These vary somewhat depending on the school. The cost of uniforms must be borne by the parents. Although all of the uniforms items are not sold locally, most of them are shorts for the boys and plain dresses or jumpers for the girls with the color being distinctive to the school. Plain brown shoes are required for both boys and girls at most schools. The items not available at the stores are usually simple to make at home for those basically qualified on a sewing machine.

J U.S. MILITARY BASES IN BERMUDA

1. Coast Guard

The U.S.C.G. Loran Monitor Station is the only Coast Guard unit in Bermuda. The Loran Monitor station is part of the East Coast Loran-C chain. Its mission is to monitor the signals transmitted by the chain transmitting stations, and accurately control the synchronization of the received signals regarding repetition rate, blink, time difference and tolerance. In addition the OMEGA system is also monitored and recorded.

2. U.S. Naval Station

The United States Naval Station, Bermuda, comprising 260 acres, is under the military command and administrative control of Commander, Naval Air Force Atlantic Fleet. The Naval Station itself is currently staffed by approximately 550 officers and men.

The present mission of the U.S. Naval Station is to provide logistic support for the U.S. Naval Facility, Office of Naval Research, visiting units of the fleet and to provide limited support of transient shipping.

Marine Barracks: (tenant activity of NAVSTA) - The Marine barracks provides perimeter security guards for the Naval Station, Naval Facility, Office of Naval Research and guards for the station's brig. They provide additional security for other short-term military and emergency operation as directed.

The following facilities are available at the U.S. Naval Station:

Nursery- rates are reasonable with special rates for working mothers and an eight hour "flat rate". Immunization cards are required for initial registration of all children.

Beauty Shop (Thurs. , Friday, and Sat. only)

Exchange (Tues. thru Sat.)

Library

Commissary (Tues. thru Sat.)

Service Station (Gasoline 17 cents per gallon)

Theater - indoor in winter, outdoor in summer

Tailor Shop

Primary Schooling (Grades K, 1, and 2nd only)

Laundry and dry cleaning

Hobby Shop

Rifle Club

Gym

Beach Shacks (Both enlisted and officer)

Youth Center- Brownies, Cubs, Boy and Girl Scout Troops ,
Teen Activities, Little League athletics

Tennis courts

Officers, enlisted and civilian clubs

Bowling alleys with auto pin setters and snack bar

Postal services - The FPO offers essentially the same services as any post office in the United States. Dependents are granted full use of these facilities; however mail destined for dependents should be addressed in care of their sponsor. The following address should be used:

NAME	RATE/RANK
USCG Loran Monitor Station	
FPO New York 09560	

Airmail from the U.S. will normally arrive in Bermuda one day after arrival in New York. Surface mail requires three to ten days from New York.

Dispensary - The Naval Station dispensary is equipped to handle outpatients only. Both attached personnel and dependents may use this service. Emergency dental treatment is available for dependents.

Religious Services - Catholic and Protestant services are held at the Naval Station Chapel. Sunday School is held in the religious center next door.

The U.S. Naval Station is located about 2 miles from the Loran Monitor Station. APPENDIX I is a copy of the joint tenancy agreement between the U.S. Naval Station and the USCG Loran Monitor Station. The Navy has made most of their facilities available to the Coast Guard personnel stationed at the Loran Monitor Station. The Navy also provides barracks space for bachelor enlisted personnel.

CHAPTER I (con't)

3. KINDLEY AIR FORCE BASE.

Kindley AFB is a Military Airlift Command (MAC) base of the 21st Air Force Command.

The mission of Kindley AFB is to provide support and maintenance for transient military aircraft, messing and billeting for aerial movements, and the logistical and administrative support of all tenant units. Kindley AFB consists of six separate units which are part of the 1604th Air Base Group and are attached for logistic and administrative support.

The facilities at Kindley AFB are much the same as those of the U.S. Naval Station except that they are generally larger. Some additional facilities are:

Self service laundromat

Shoe repair shop

Rifle Club

Boat Club

Religious activities: Regular religious services are held for Roman Catholic, Protestant and Jewish personnel. The church of the Latter-Day Saints has its own worship services conducted by lay leaders.

American Red Cross - maintains an office at Kindley.

Veterinary Service - the primary function of the veterinary section is to provide a complete food inspection service. The operation of a small animal clinic is an included service of the overall veterinary program. The purpose of this clinic is to control and treat those diseases transmitted by animals to human beings. The clinic does not repair fractures, perform any services to animals which are of a cosmetic nature, or board them. Immunization of pets and other services performed by the clinic are by appointment only.

Schools - there are two schools at Kindley operated by the Navy according to U.S. standards. The elementary school does not include kindergarden and children must be six years old by 1 January of the school year in order to enroll in the first grade. The high school is fully accredited as a college preparatory school. Contract buses furnish transportation from most areas of the island to Kindley schools.

CHAPTER I (con't.)

Dispensary - Out-patient and in-patient treatment for all military personnel. Outpatient treatment is available for dependents.

www.loran-history.info

CHAPTER II OPERATIONS

A AID TO NAVIGATION. The mission of the Loran Monitor Station is to operate and maintain Loran C and OMEGA monitoring equipment for the purpose of observing and checking radio navigation signals transmitted by specific loran and OMEGA transmitting stations. At the present time the facilities of this station are employed by the East Coast Loran C chain which consists of a master station (Carolina Beach N.C.) Whiskey slave (Jupiter, Florida) X-ray slave (Cape Race, Newfoundland) and a Yankee slave (Nantucket, Mass.) This station measures the accuracy and stability of synchronization and directs timing and delay adjustments to maintain the observed time differences within tolerance of comparison numbers (Standard Difference.)

This unit also maintains an active monitoring role in the OMEGA world wide navigation system by observing, checking, and logging changes in phase relation between two OMEGA transmitting stations. At present we monitor 12 line of positions (A-B) (D-D) (A-C) and (A-D) on 3 separate frequencies 10.2, 12.6, and 11.3 KHZ. OMEGA transmitting stations are:

- A. ALDRA, NORWAY
- B. TRINIDAD
- C. HAWAII
- D. FOREST PORT, N.Y.

OMEGA is a VLF system of navigation similar to Loran C in that it uses a hyperbolic system and phase relation.

B WATCHSTANDING.

Two continuous live watches are maintained:

- a. LORAN - Communications - Security Watch
- b. OOD - Loran Supervisor Watch

The supervisor watch is an experienced man qualified for maintenance work. He supervises the loran watchstander, releases messages concerning coding and timing adjustments and performs maintenance work when required.

The loran watch continuously checks and measures the accuracy and stability of synchronization of the chain, maintains communications with the chain and makes appropriate log entries concerning chain operations.

C DAILY ROUTINE. A typical daily routine is as follows:

0630 Day Watch Breakfast
0700 Relieve Eve Watch
0745 Liberty expires for day workers
0800 Turn to on station work
1130 Dinner
1245 Turn to on station work
1615 Supper for Eve Watch
1630 Secure from station work, liberty granted to
day workers
1645 Relieve Day Watch
2345 Relieve Eve Watch

Watchstanders bring their lunches and eat onboard. A refrigerator and electric range are available to do light cooking.

CHAPTER II (con't)

- D COMMUNICATIONS. In order to provide timely information to the loran chain, good communications between the monitor and the transmitting stations are required.

Communications are maintained with the Loran Transmitting Stations at Carolina Beach, North Carolina, Nantucket, Massachusetts, Cape Race, Newfoundland, and Jupiter, Florida by landline teletype. Single sideband voice is used for back-up and communications with all stations on the East Coast Network. In addition, radio teletype is used with Carolina Beach, Nantucket, and Cape Race.

- E LIASON. Liason is maintained with the local government and the other U.S. military activities on the island in regard to civil violations, investigations, and mishaps occurring to Coast Guard personnel while in Bermuda.

- F VEHICLES. There are two vehicles assigned to the station. One is a Cortina staff car and the other is a Bedford Van type light truck. Both are equipped for right hand drive on Bermuda roads. These vehicles are for transporting watchstanders and station personnel to the Naval Station for messing and quarters, and for mail and logistic runs.

CHAPTER III PERSONNEL

A COMPLEMENT. The authorized personnel allowance is one officer and eleven enlisted men of the following categories:

Officer:	CWO-4 (ELC)	Enlisted:	1 ETC
			3 ET2
			3 ET3
			1 ETN3
			1 SK2
			2 SN

- B ADMINISTRATION OF PERSONNEL RECORDS. Personnel records are maintained at the Fifth CoastGuard District. CG Institute tests are administered by the Commanding Officer, Loran Monitor Station. The Loran Monitor Station maintains educational and health records.
- C MEDICAL FACILITIES. Outpatient treatment is handled at the dispensary at the U.S. Naval Base. Minor inpatient requirements can be taken care of at Kindley Base. Other treatment including obstetric care is referred to King Edward VII Memorial Hospital at Pagent Parish (near Hamilton). Major cases are air evacuated to stateside facilities. Dental care is provided for military at the Naval Station. Dependents are also taken care of on a space available basis.
- D TRAINING AND EDUCATION. The station has a current training program geared to maintain on-the-job proficiency in both technical and supervisory aspects, as well as the general broad spectrum of the service.

The University of Maryland conducts an extension program of limited subjects at Kindley Air Base.

USAFI and CG Institute courses are available and are encouraged to be utilized by personnel.

E MORALE AND WELFARE

1. Outdoor Recreational Facilities

Off base facilities are many, since this is a pleasant resort. The most popular off base activities are golf and swimming (including both scuba and snorkle diving.) There are many beaches and golf courses.

Fishing - the waters surrounding Bermuda abound with hundreds of varieties of game fish, resulting in excellent shore, reef and deep sea angling. The annual Bermuda game fishing tournament attracts anglers from many parts of the world.

CHAPTER III (con't)

Sailing - Bermudians are great sailors and have established a reputation that is recognized in yachting circles the world over. International yacht races are annual events in the Great Sound, and the Bermudian style dinghy is traditional.

Golf - Bermuda probably has more golf courses per square acre than any other country. There are five 18 hole courses, including the famous Mid Ocean Club, and two sporty nine hole courses. The annual Bermuda golf championship draws an international field of competitors.

Beaches - the beaches are perhaps one of the greatest attractions to be found in the colony, stretching for miles along the picturesque south shore and broken only by headlands and small sections of rugged coral formations. Coral reefs which circle Bermuda just off shore provide excellent protection for bathers.

2. Indoor recreational facilities are as listed for U.S. military bases as listed for U.S. Military Bases in Chapter I.
3. Mail is received daily. All mail via FPO New York is flown in except for bulky items which come in by surface vessels. The correct address to use is shown with special instructions under "Postal Services" for "U.S. Naval Base" in Chapter I.
4. Exchange privileges are afforded Coast Guard personnel at the Naval Base and at Kindley Air Base.

F All water for drinking is "catch water" or rain water.

G LEAVE AND LIBERTY Leave is granted in accordance with USCG Loran Monitor Station, Bermuda Instructions. Regular leave falls into two categories: • CONUS leave and island leave. Emergency leave is granted whenever conditions warrant.

a. Continental U.S. Leave - under normal conditions a member is required to take 30 days leave to go to CONUS. Arrangements can be made for the commercial airlines, or ship-board transportation.

b. Island leave - personnel desiring island leave must take at least 5 days under normal circumstances.

Liberty is granted by the Comm. Officer subject to SOPA Instructions (CO, NAVSTA Bermuda is SOPA.) All personnel are required to keep a current recall card on file in the station office. This card contains the address (including locating instructions) and a home phone number in addition to a neighbor's phone number in case of emergency.

CHAPTER IV STATION ENGINEERING

A. GENERAL ENGINEERING

1. **Power Plant:** Power is supplied by the U.S. Naval Station on a reimbursable basis. A 75 KVA transformer is located behind the Loran Monitor Station main building. The primary voltage is 2400 volts, secondary 120/208 volt, 4 wire, 3 phase, 60 cycles per second. Although power outages are rare, the Naval Station has the capability of switching to Bermuda power if an emergency should arise.
2. **Damage Control:** Damage control equipment consists mainly of fire extinguishers and garden hose. Four 15 pound CO-2 and two 20 pound dry chemical extinguishers are located in the main building. One 15 pound CO-2 is mounted outside the storage building. Garden hose, connected to the fresh water service, is located inside and outside the main building.

The Naval Station fire department (2 miles from Monitor Station) conducts fire inspections of the Monitor Station and is available to give assistance if required.
3. **Electrical System:** The three phase power from the secondary of the main transformer (located outside) is distributed throughout the station from one main panel located in the main building Operations Room. 208 volts is used for the station electric stove-refrigerator combination, and to the isolation transformers with tapped secondaries, one for each AN/FPN-43 Loran-C timer. The station has incandescent lighting and ample 120 volt outlets. The air conditioning unit uses 208 volts.
4. **Heating System:** Very little heat is required due to heat generated by electronics equipment; however, the two office spaces utilize 1250 watt electric heaters mounted in the wall. The storage building is not heated.
5. **Ventilation System:** The main building at the Monitor Station uses a CARRIER COMMERCIAL AIR CONDITIONER, Model K50-8 with a capacity of 7.5 tons for distribution of cool air through ducts in the ceiling. The building also contains eleven large windows. The Storage Building is not air conditioned but has a dehumidifier unit installed.
6. **Fuel Oil System:** Oil and gasoline are supplied by U.S. Naval Station on a reimbursable basis. Emergency supply of gas for station vehicles are supplied in two 5 gallon safety cans in a Gasoline Storage Locker.

CHAPTER IV (con^ot.)

8. Fresh Water System: Fresh water is supplied by the U.S. Naval Facility, Tudor Hill at no cost. The Coast Guard purchased and presented a water pump and a hypochlorinator to the Naval Facility in exchange for water service. The Naval Facility operates and maintains the water system for all units on Tudor Hill.
9. Buildings: The station has two buildings. The main building is 48 feet by 22 feet. The storage building is 14 feet by 14 feet. Both buildings are constructed of concrete blocks with stucco finish.

The main building has six rooms: main equipment room, air conditioner room, spare parts storage room, CO's office, station office and head. The storage building has only one room. The storage building is located about 70 feet from the main building and is connected by a walkway.

B. ELECTRONIC EQUIPMENT.

1. Loran Monitoring Equipment:

AN/FPN-43 Loran Area Monitor Equipment - a modified AN/FPN-41 timer with spectrum analyser, pulse analyser, noise and interference evaluator and various other circuits principally designed for monitor use. Two AN/FPN-43 equipments are installed. A type AN /URQ-14 oscillator is used and also cesium beam frequency standard (HP 5061A)

AN/GSH -18 Recorders - used for recording envelope and cycle time difference readings for each equipment.

Antenna - A vertical long wire 55^o long is used with the AN/FPN-43 timers. The antenna is supported by a 65 ft. pole.

2. Communication Equipment: AN/URT-17A Radio Transmitters -

very versatile transmitter capable of transmitting 1000 watts CW or FSK, 750 watts PEP single sideband and 750 watts phone from 2.0 to 32.0 megacycles. Two of these transmitters are installed.

R-840/URR Radio Receiver - 10 crystal controlled channels and VMO permit reception from 2 to 32 mcs. Two of these receivers are mounted in the console.

CV-591A/URR Single Sideband Converter - two are mounted in the console.

CCVO-SR-7R radio Receiver - a WWV receiver with switch position tuning for reception of WWV time signals also mounted in the console.

CHAPTER IV (cont.)

CAOR-1946-A Tone converter - used for tone RATT reception (with Carolina Beach, Nantucket, and Cape Race Loran Stations.) Two are mounted in the console.

CAOR-995B-T Tone Keyer - used for tone RATT transmissions, two are mounted in the console.

TT-187/UG Transmitter-Distributor - for teletype tape transmission.

TT-253/UG Perforator-Reperforator.

TT-48C/UG Teletypewriters (Model 28 KSR) - one for landline communications with the circuit, the other for radio teletype (RATT) operations.

Antennas - a vertical 40 foot stranded wire is used with an AN/URA-27 coupler connected to one of the AN/URT-17A transmitters and a vertical 55 foot stranded wire is used with an AN/URA-27 coupler connected to the other AN/URT-17A transmitter.

5. Omega Equipment: Omega receiver - Tracor model 599R a receiver, used for monitoring OMEGA (a hyperbolic Low frequency system) Three of these receivers are mounted in a cabinet.

Antenna, Multi Coupler Tracor model 607 used with Tracor antenna, provides antenna input to each receiver from one antenna.

Multi point Recorder - Honeywell model Electronic 15, used to record phase difference readings from each channel of OMEGA receivers.

4. Test Equipment:

HP-175A Oscilloscope with plug in preamplifier and sweep generator is the primary scope on the station.

HP-5246L frequency counter is available for test work, and measuring transmitted frequencies etc.

HP-510A Wave analyzer is available for accurate measurement of Loran interfering frequency.

Other standard test equipment such as signal generators, vacuum tube volt meters, multimeters, capacitance analyzers, tube testers, etc. are carried on board and are adequate for the station's needs.

- A COMMISSARY. Coast Guard personnel and their dependents utilize commissaries at both Kindley and at the Naval Base.
- B SUPPLY. Requisitions are submitted to the Coast Guard Supply Depot, Portsmouth, Virginia or NAVSTA Bermuda for all station supplies. Assistance with Navy stock numbers may be obtained from Navy Technical Section, NAVSTA, Bermuda.

The following Naval Station shops are available for maintenance of Coast Guard equipment and buildings on a reimbursable basis:

- Automotive Shop
- Electric Shop
- Glass Shop
- Iron Shop
- Machine Shop
- Plumbing Shop
- Reefer Shop
- Sheet Metal Shop
- Rodent Control

Subhead 42 and 43 allocation accounts are used for operation and for procurements of this station.

- C PAY. The pay records of personnel attached to the Loran Monitor Station are held by the Fifth Coast Guard District. Pay days are observed at the monitor station for attached personnel on the days specified by a CCGD5 INST. Checks are mailed to arrive on or before pay day.
- D FUEL AND OIL. The Naval Base has a station for official vehicles and the exchange operates a station for private conveyances.
- E TRANSPORTATION. Your immediate transportation opportunities are these: If you reside temporarily in hotel-type accommodations, the problem of transportation is most difficult. This can be overcome by either hiring a taxi, at a nominal rate, or buying a car immediately upon arrival. Taxis are not as reliable, or as punctual as in the states but if you are patient they will get you to your destination.

Bus and ferry service is available from certain points on the island. The buses are slow and have unreliable schedules. The ferry rides are pleasant when they go where you want to go.

Many people ride small motorcycle or motor assisted bicycles which provide a cheap, but hazardous, means of transportation due to the congestion on the road. Military orders require all military personnel to wear a "hard hat" while riding on any motor assisted bicycle.

There are approximately 100 miles of roadway, most of which is paved with asphalt bound macadam. The maximum speed limits are 20 miles per hour in the open areas and 15 miles per hour in towns and built-up areas. This may sound awfully slow, however, when you have driven these narrow winding paths for a while you may consider this speed too fast for some of the areas. Road widening is in progress in many

areas. The speed limit is enforced with radar, and the punishment for infractions of traffic laws can be severe.

Bermuda driving is done on the left hand side of the road, so that some adjustment is necessary before driving down the road.

If shipment of privately owned vehicles is anticipated, the following restrictions exist:

- a. Vehicle must have been purchased new and be less than six months old at the time of shipment.
- b. The engine capacity must not exceed 14 British Horsepower (90 Brake Horse power) or 2,000 cubic centimeters displacement
- c. The overall length shall not exceed 166 inches, and the overall width shall not exceed 64 inches.

Normally no American automobile meets these conditions and it is necessary to sell or leave your automobile in the states and buy either a new foreign car in the states or a new or used car in Bermuda.

CHAPTER VI ADMINISTRATION

A CHAIN OF COMMAND - for Logs reports and official Correspondence. Responsibilities for command and control of this station are vested in the following command or staff elements:

Command.....Commandant
 Commander, Fifth Coast Guard District

Operational
 Control.....Commandant (O)
 Commander, Fifth Coast Guard District(s)
 Chain Operations Control Officer
 Carolina Beach, N.C.

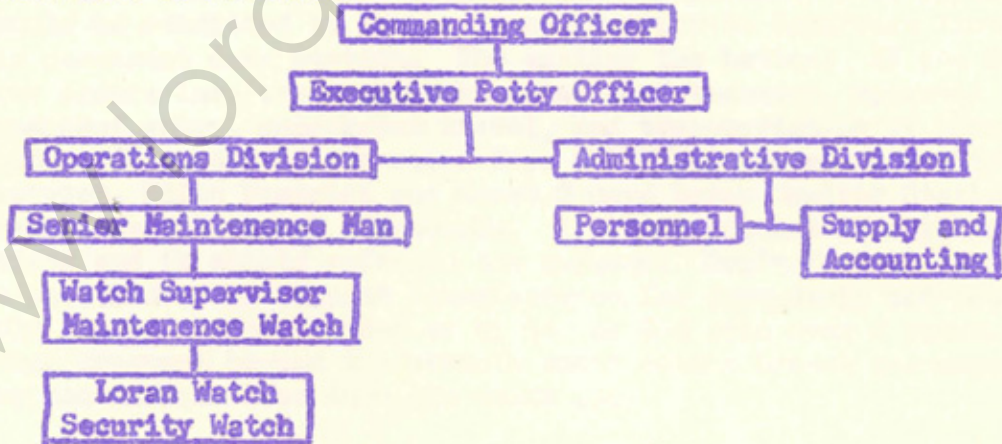
Technical
 Control.....Commandant (E)
 Commander, Fifth Coast Guard District(e)

Administrative
 Control.....Commandant (F, E, AND P)
 Commander, Fifth Coast Guard District
 (f, e, and p)

B OFFICIAL CORRESPONDENCE AND REPORTS

1. Loran C and Communications logs are submitted as required
2. Allocation reports are submitted monthly
3. Health records and training records are maintained at the station.

C DELEGATION OF AUTHORITY



D STATION BILLS. All station orders, emergency, and routine bills are maintained with the Station Organization Book.

CHAPTER VII GUIDANCE FOR RELIEF PERSONNEL

A. MAILING ADDRESS. In order to avoid difficulties with Bermuda Customs, have all advance shipments sent to:

Commanding Officer
USCG Loran Monitor Station
FPO, New York 09560

B. STAMPS. U.S. postage and postal services are available at the U.S. Naval Base.

C. FAMILY FACILITIES. Available at both the Naval Base and Kindley Airfield, as listed in Chapter 1.

D. THINGS TO DO AFTER RECEIVING ORDERS. If concurrent travel of dependents is desired, certain conditions must be met. This guide is to help you meet these conditions.

1. First and foremost is proper submission of proper documents through proper channels. Note the repeated use of the word "proper." While it is encouraged and often necessary to write personal letters to a shipmate for help in obtaining your Bermuda housing, official request for entry, transportation of dependents, transportation of household goods, and shipments of privately owned vehicles must be handled through official channels.

If your unit has a transportation officer, consult with him. To avoid last minute delays, decisions, and paperwork, your application should be submitted at least six weeks prior to departure from your old permanent duty station. The earlier the better. If you receive your orders less than six weeks prior to detachment, approval of dependent entry, concurrent travel, and transportation of household goods should be requested from COMDT(FS) via message with your district, Fifth District and Coast Guard Loran Monitor Station, Bermuda as additional addressees. A letter request is still required and it should refer to the message. Don't forget! To be entitled to government transportation for dependents and household goods you must be E-5 or higher or E-4 with over 4 years. Women pregnant beyond the seventh month cannot travel overseas, nor can infants less than six weeks old.

Enclosure one to this chapter is a sample letter to be used for guidance. Please note the order and number of via addresses, and the enclosures.

Area clearance is not required for Bermuda and neither are passports. However, birth certificates and shot records for children are necessary.

CHAPTER VII (con't.)

Upon receipt and approval of your application, this unit will assign a sponsor. It is the sponsor's responsibility to write to you and explain any changes to these instructions. Another of his responsibilities is to obtain temporary quarters for you and your dependents and to meet you when you arrive. In order to do this it is necessary that you inform him of your time of arrival, number of dependents and your mode of transportation.

2. Have all dependent dental work completed. The Naval Base will not do dental work if this is outstanding upon arrival. They will be examined to be qualified for future work on a space available basis.
3. Obtain necessary clothing and shoes for children, as selection in Bermuda is limited and prices are higher than stateside costs.
4. Obtain required immunizations.
5. A running account with a reliable mail order house such as Sears Roebuck or Spiegel can be convenient.
6. Do not incur excessive debts before leaving the states as you will find the cost of living in Bermuda very high, and the cost of living allowance grossly inadequate.
7. If you can bring \$400 to \$500 in cash with you it should see you through until your TIA starts to catch up with you. This is because you will no doubt have to start off in temporary housing until your furniture arrives and you can locate a suitable house.

E HOUSING, UTILITIES, AND HOUSEHOLD EFFECTS. Barracks space is provided for bachelor enlisted personnel at the Naval Base. There is no military housing available to the Coast Guard. Families who require three bedrooms or more will find such accommodations extremely scarce. Rental rates are quite expensive. The rates for single bedroom unfurnished housing are from \$96 to \$170 per month. Two bedroom housing ranges to \$250 and greater. Three bedroom housing is out of sight. Bermuda has a critical housing shortage and rates are continuing to sky-rocket. Few of the houses have adequate storage and closet space and very few have central heat. Many have fire places, but usually the andirons, etc. are not furnished.

The word "furnished" has a different meaning in Bermuda. Very few, if any, of the "furnished" houses have enough items to be called a furnished house by U.S. standards. As a general rule the furnishings are very old and the stove and refrigerator are small models.

Service for all U.S. name brand appliances is available locally; however both parts and labor are expensive. It is advisable to have all your major appliances checked by a good service man prior to shipping. Special consideration should be given to such items as worn or frayed drive belts, weak and worn gaskets, hoses about to fail, etc.

CHAPTER VII (con't.)

These few dollars spent may save inconvenience and/or expense after arrival in Bermuda. If rust has started on appliances, it will spread rapidly here.

Heaters of some type will be desired. Electric, gas, and kerosene are common. Electric types are expensive and many houses are not adequately wired for heaters and the risk of overloaded circuits is great. Gas heaters may suit you better if you plan on a gas stove. These should be obtained after your arrival and when your requirements are determined.

Stoves- electric costs are discussed under utilities. There are frequent power outages during the windy winter months. Most houses are or can be wired for electric stoves.

Gas - bottled gas is used throughout the island.

Freezers - bring one if you have it. Major drawback is space. It is not good to put the freezer on the porch or carport as many people do in the states, for it will rust rapidly.

Washers and dryers - automatic washers are common although persons with small water tanks will find the wringer type will help conserve water. The comparison of electric and gas dryers is the same as for stoves. A dryer is very useful during the damp winter months when outdoor drying may be impossible for periods of several days to a week at a stretch.

Radio and television - there are three AM radio and one FM radio stations in the colony. There is presently one VHF channel in operation from 3:30 or 4:00 PM till midnight.

Air conditioners - are a help in combating the mold and mildew prevalent during the humid summers. 220 volts outlets are not common.

Furniture and furnishings - those which are constructed for use in a tropical climate will give the most satisfactory service. The extreme humidity and mildew is very damaging to veneer, overstuffed or leather furniture. Rust and corrosion are problems that we must pay particular attention to, however with care, it is possible to combat them. Silver and gold plated and brass items will pit and corrode due to the salt air, but with constant cleaning and storage in a heated place you can maintain them in excellent condition. Oil paintings will deteriorate here. Rugs are a difficult item to offer advice on. Many of the floors are tile or concrete or coral, with the water tank under part of them. This of course, makes them damp and cold. Although the rug will add to the comfort, wool rugs tend to develop an odor during the summer months unless air conditioning or dehumidifiers are used.

Water supply - water must be conserved at all times. How much you have to conserve depends on the size of your tank and the amount of rainfall. There is no standard size tank. Although there is no rainy season in Bermuda, the months of November through April are wetter than in the summer months.

CHAPTER VII (con^ot.)

A family of five can figure on using about 150 gallons of water a day which requires at least a 12,000 gallon tank to last through some of the droughts. Most everyone in Bermuda knows that every time you pull the chain seven gallons go down the drain. Water may be trucked in at \$10.00 per 1,000 gallons.

Electricity - electricity is expensive compared with many parts of the states. Regular 115 volt, 60 cycle current is supplied so there is no problem using U.S. appliances. Cost is approximately \$16 for 400 KWH and \$2.50 for each additional 100 KWH. Monthly cost for a family of four runs about \$25.00 with the average appliances. Electric heaters or air conditioners can double this.

Gas - bottled gas is approximately \$14 per 100 pound bottle. If you have a gas stove and a gas heater, you may qualify for a discount price.

Telephones - service runs close to U.S. costs at about \$7.00 per month. There are some areas where lines are in short supply, however facilities are expanding rapidly. Many persons are on waiting lists; however, the USCG has a priority due to recall status, and few of our people are without phones.

5. Pets. The following rules are required by Bermuda law for importation of pet animals (dogs and cats):

a. "No dog or cat shall be landed in these islands unless it is accompanied by a certificate issued by a competent authority (veterinarian) that ---

1. It is not infected with any communicable animal disease.
2. That area or areas within a radius of 50 miles from the place or places where such dog or cat has been kept during the 6 months prior to its shipment has or have not been infected with rabies for at least one year prior to its shipment to these islands; and the dog or cat has been vaccinated with anti-rabies vaccine not less than one year prior to shipment to these islands.

b. No animal shall be imported to these islands except with the written permission of the director of agriculture and fisheries. Application must be received at least 10 days prior to the intended date of arrival of the animal in the colony. Animals without this permit will be refused entry. This permit may be obtained by writing:

Director
Department of Agriculture and Fisheries
Botanical Gardens
Paget East, Bermuda

4. Firearms are not permitted on the island.

F. ADDITIONAL REQUIREMENTS FOR A RELIEVING C.O.

1. Have your sword with you.
2. Bring at least two white uniforms, two short sleeve white shirts, and both large and miniature medals.

G. SPECIAL ALLOWANCES

1. Temporary lodging allowance (TLA) This is to cover excessive expenses involved in occupancy of hotel like accommodations while awaiting the arrival of your household goods. TLA can be paid up to 60 days, however, entitlement ceases upon delivery of your household goods to your home in Bermuda. The 60 day period commences upon arrival of one or more of your dependents.

You will not be eligible for TLA if you rent a furnished house and the house is available for occupancy, regardless of the date of arrival of your household effects.

2. Comrats. Other entitlements to pay and allowances remain the same as in the states with the exception of commuted rations. COMRATS may be and usually are authorized to all hands aboard the monitor station.
3. Housing Allowance. (HA) This allowance is to help compensate for the high cost of living in Bermuda. The amount of this allowance is determined by periodic surveys of costs in Bermuda and comparing them to an index in the cost of living in the U.S. This allowance varies according to pay grade and number of dependents.
4. Travel to and from Bermuda. Transportation to Bermuda is arranged by the Commandant (FS) through your district or unit transportation officer, and/or the Fifth District.

It is standard policy to utilize government transportation to the fullest extent possible outside CONUS, however, MAC runs only random flights into Bermuda. Usually a Government Transportation Request will be issued for a commercial air carrier from New York or another East Coast Port. Since surface travel is not available via U.S. flag vessels, special approval of the Commandant is required to travel by ship from New York.

If you should travel by commercial carrier, either air or surface it will be necessary to clear through Bermuda Customs and Immigration. A copy of your orders will clear the service member and the personal effects through both Customs and Immigration.

CHAPTER VII (con't.)

In order for dependents to clear Bermuda Immigration, a certificate of guaranteed return travel is required. Although some Immigration officers will accept your orders as a guarantee, they prefer to have the certificate issued by the Loran Monitor Station. If time permits you should notify the Loran Monitor Station of the time of expected arrival and the mode of travel early enough to have a certificate mailed to you. If you are unable to give advance notice of your arrival, there is a possibility that your dependents will be held by immigration pending receipt of clearance from the Loran Monitor Station.

DEPARTMENT OF TRANSPORTATION
UNITED STATES COAST GUARD

Commanding Officer
(Your present unit)

ADDRESS REPLY TO:



4050
(Date)

From: (You)
To : Commandant (FS-2)
Via : (1) Commanding Officer, (Your present unit)
(2) Commander, (Your present) Coast Guard District (f)
(3) Commanding Officer, USCG Loran Monitor Station, Bermuda
(4) Commander, Fifth Coast Guard District (f-1)

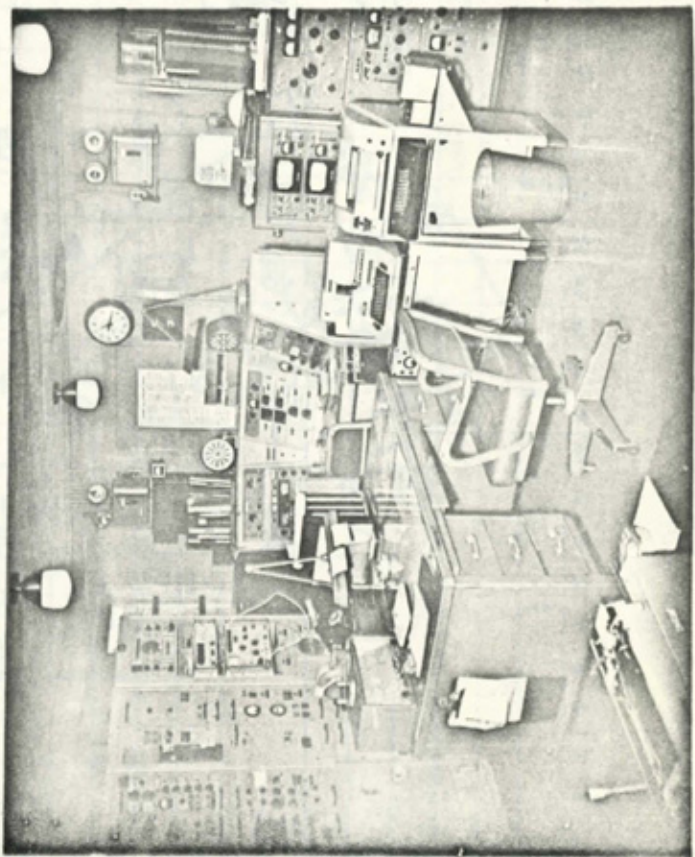
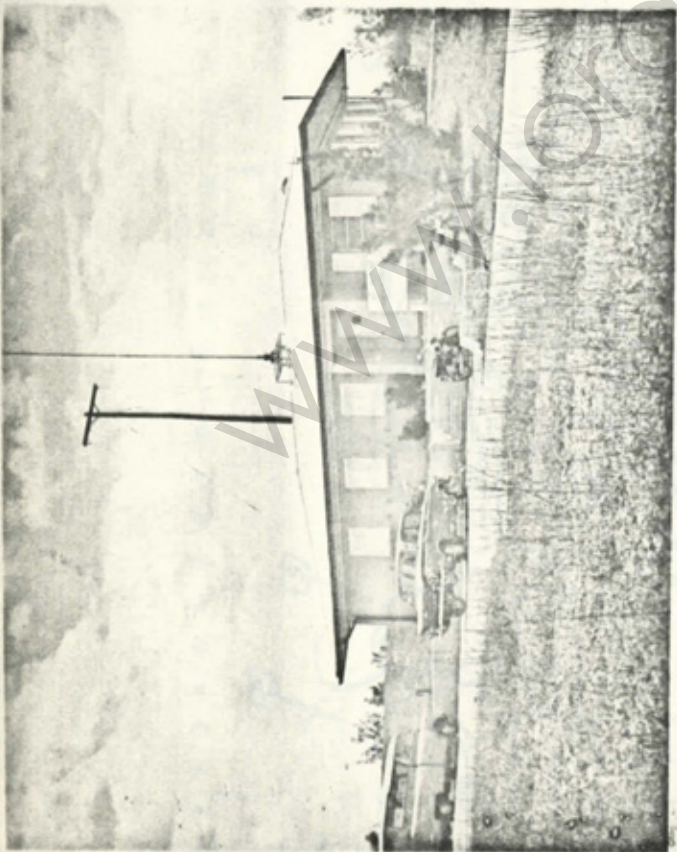
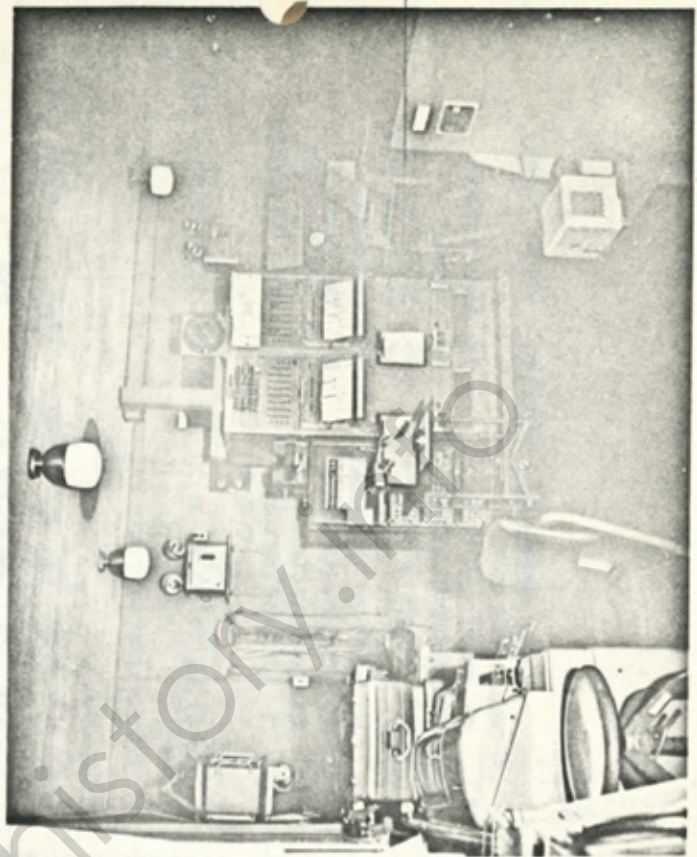
Subj: Authorization for Concurrent Travel of Dependents and Shipment of Household Effects (and POV if applicable); Request for

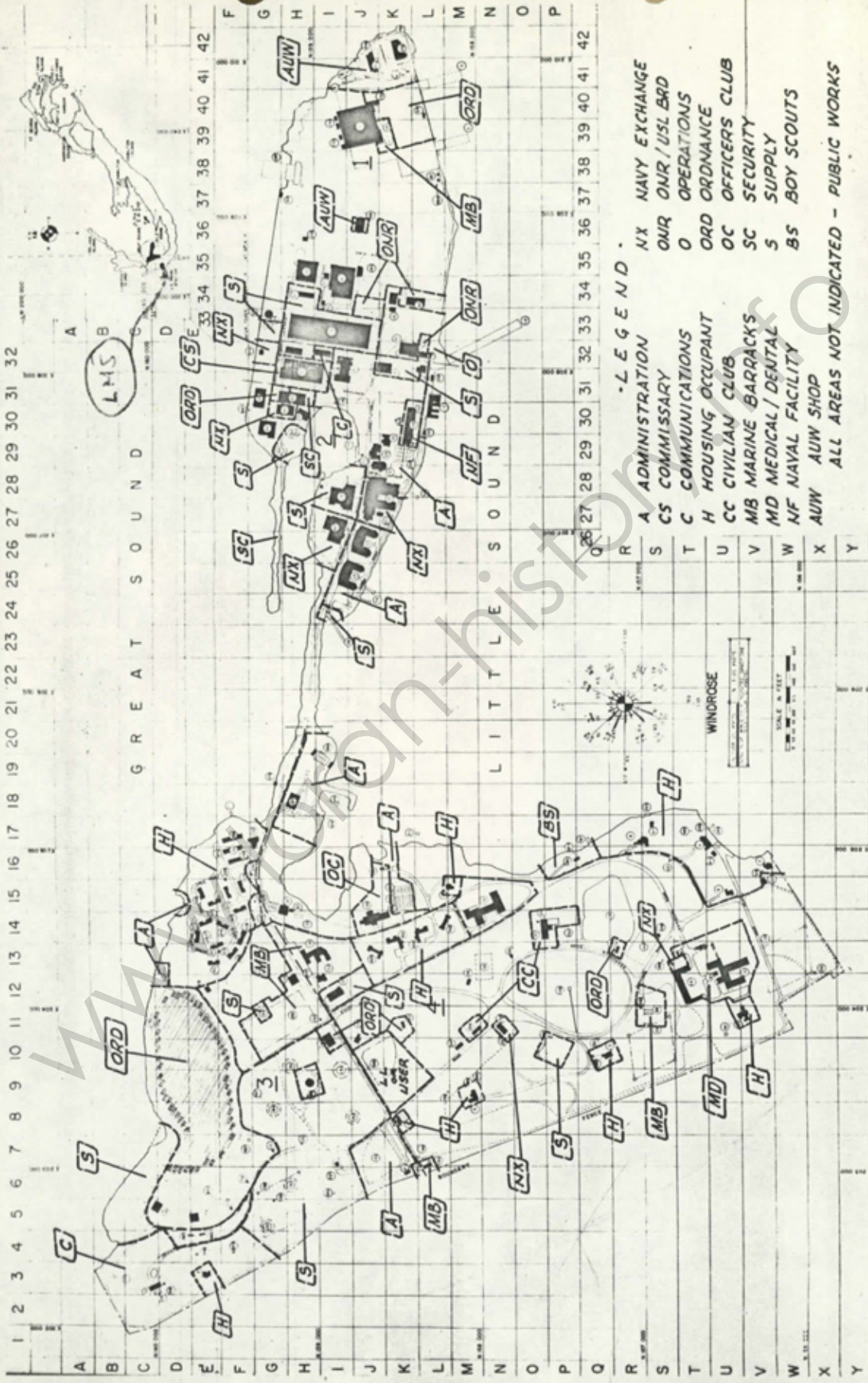
Ref : (a) CG Travel Manual; Paragraph B07D10 and B07D12
(b) (Your TONO)

1. Subject request is respectfully made herewith in accordance with reference (a).
2. Personal data of my dependents is as follows:
 - a. (Name), Wife, Married on (Date)
 - b. Children:
 - (1) (Name), (Sex), Born on (Date)
 - (2) (Name), (Sex), Born on (Date)
 - c. Estimated time of arrival in Bermuda is on (Date)
 - d. My wife (is/is not) greater than six months pregnant.
3. The required immunizations and dental work for my dependents will be completed prior to departure.

(Your Name)

Enclosure: (1) Two copies of (Your TONO)





LEGEND

- NX NAVY EXCHANGE
- OUR ONR / USL BRD
- O OPERATIONS
- ORD ORDNANCE
- OC OFFICERS CLUB
- SC SECURITY
- S SUPPLY
- BS BOY SCOUTS
- A ADMINISTRATION
- CS COMMISSARY
- C COMMUNICATIONS
- H HOUSING OCCUPANT
- CC CIVILIAN CLUB
- MB MARINE BARRACKS
- MD MEDICAL / DENTAL
- NF NAVAL FACILITY
- AUV AUV SHOP

ALL AREAS NOT INDICATED - PUBLIC WORKS

2 3 4 5 6 7 8 9 10 11 12 13 14 15 16 17 18 19 20 21 22 23 24 25

A B C D E F G H I J K L M N O P Q R S T U V W X Y

G R E A T S O U N D

L I T T L E S O U N D

LMS

WINDROSE

SCALE IN FEET